

AD 2. AERODROMES

FYWH AD 2.1 AERODROME LOCATION INDICATOR AND NAME

FYWH - Hosea Kutako International Airport, Windhoek

FYWH AD 2.2 AERODROME GEOGRAPHICAL AND ADMINISTRATIVE DATA

1.	ARP co-ordinates and site at AD	222847.62S 0172815.42E Intersection of RWY 08/26 and 16/34
2.	Direction and distance from (city)	24.3NM/45KM East of Windhoek
3.	Elevation/reference temperature	5 641 FT/30 °C
4.	Geoid undulation at AD ELEV PSN	102 FT (30 M)
5.	MAG VAR/annual change	12° W (2023) / 0.08° decreasing
6.	Name of aerodrome operator, address, telephone, telefax numbers, e-mail address, AFS address and, if available, website address	Namibia Airports Company Limited Hosea Kutako International Airport P.O. Box 1 WINDHOEK NAMIBIA Mr. Alexander Gairiseb: Senior Airport Manager Contact Details Tel: +264 61 2955601, Fax: Nil Cell: +264 81 1434740 (during or after hours) E-mail: gairiseba@airports.com.na Website: www.airports.com.na ATC Tel: +264 62 702490/1/2/3 Fax: +264 62 702499 NCAA Fax: +264 61 702099 AFS: FYWHYDYX
7.	Types of traffic permitted (IFR/VFR)	IFR/VFR
8.	Remarks	Nil

FYWH AD 2.3 OPERATIONAL HOURS

1.	<i>AD Administrator</i>	MON-SUN: 0300-1930
2.	<i>Customs and immigration</i>	As AD Administration
3.	<i>Health and sanitation</i>	As AD Administration
4.	<i>AIS briefing office</i>	Nil
5.	<i>ATS reporting office (ARO)</i>	Nil
6.	<i>MET briefing office</i>	24 HR
7.	<i>ATS</i>	24 HR
8.	<i>Fuelling</i>	As AD Administration
9.	<i>Handling</i>	As AD Administration
10.	<i>Security</i>	24 HR
11.	<i>De-icing</i>	Nil
12.	<i>Remarks</i>	See section AD 2.20 for Airport Regulations. AIS Briefing Office located at FYWE

FYWH AD 2.4 HANDLING SERVICES AND FACILITIES

1.	<i>Cargo-handling facilities</i>	Forklift capacity 3 tons, 2.5 tons Double Container pallets/ dolleys, Cargo Dolleys, Single container Dolleys, Wooden Panel Baggage cart, 1 High-Low Loader(TLD), 1 Lower –deck loader (TLD) 3 Baggage Loading belts (NBL), 3 Ground Power Units (TLD), /1 Passenger Aid Unit (PAU) ,2 Nonmotorized steps-Wide body, 2 Narrow body steps Nonmotorized, 1 Motorized Steps-Wide body, 1 Toilet service, 1 water cart services, 2 Tractors, (TLD) 1 Nissan Tractor
2.	<i>Fuel/oil types</i>	Jet A1
3.	<i>Fuelling facilities/capacity</i>	Hydrant refueling system and Bowser of 18,000L. One truck with capacity of 18,000L with a floor of 900 litres/min
4.	<i>De-icing facilities</i>	Nil
5.	<i>Hangar space for visiting aircraft</i>	Nil
6.	<i>Repair facilities for visiting aircraft</i>	Nil
7.	<i>Remarks</i>	Nil

FYWH AD 2.21 NOISE ABATEMENT PROCEDURES

Nil

FYWH AD 2.22 FLIGHT PROCEDURES

General:

Communication Failure Procedure

Aircraft should adhere to the procedures stipulated in ENR 1.5 Section 6 (ICAO Doc 4444 Chapter 15, 15.3). In addition, the relevant procedures below shall be applied by inbound aircraft.

If able contact ATC on telephone +264 61 702290

For IFR Traffic

1. Squawk 7600
2. Approach clearance received and acknowledged:
Continue approach according to clearance.
3. No approach clearance received and acknowledged:
 - Maintain last assigned level received and acknowledged, but not below MSA.
 - Proceed via WHV VOR then via R050 WHV to intercept the 14DME arc to join the hold at IMPEP;
 - In IMPEP hold descent to 8000FT MSL.
 - Carry out instrument approach to the most suitable runway, or if EAT is received and acknowledged, leave IMPEP on EAT.
4. If issued with a STAR, refer to Communication Failure Procedure for the STAR being flown. Comply with all lateral, vertical and speed requirements of the STAR. Holding is not required when issued with a STAR, unless an EAT has been received and acknowledged including delays/holding for traffic management purposes.

For VFR traffic

- a) Squawk Code 7600
- b) Join overhead the aerodrome at 2000FT AGL
- c) Observe and join the Aerodrome traffic circuit
- d) Make all turns to the left whenever possible
- e) Land as soon as possible and report to the ATC

Speed Restriction

Speed restrictions within Windhoek TMA for arriving and departing aircraft, MAX IAS 250KT restriction applies at and below FL150. Speed is mandatory and must be complied with. ATC may vary the speeds for traffic management purposes.

FYWH AD 2.23 ADDITIONAL INFORMATION

Bird concentrations in the vicinity of the airport.

1. Concentration of birds around the runway and in the vicinity of the aerodrome, pilots and airport users to exercise caution.

FYWH AD 2.24 CHARTS RELATED TO HOSEA KUTAKO AERODROME

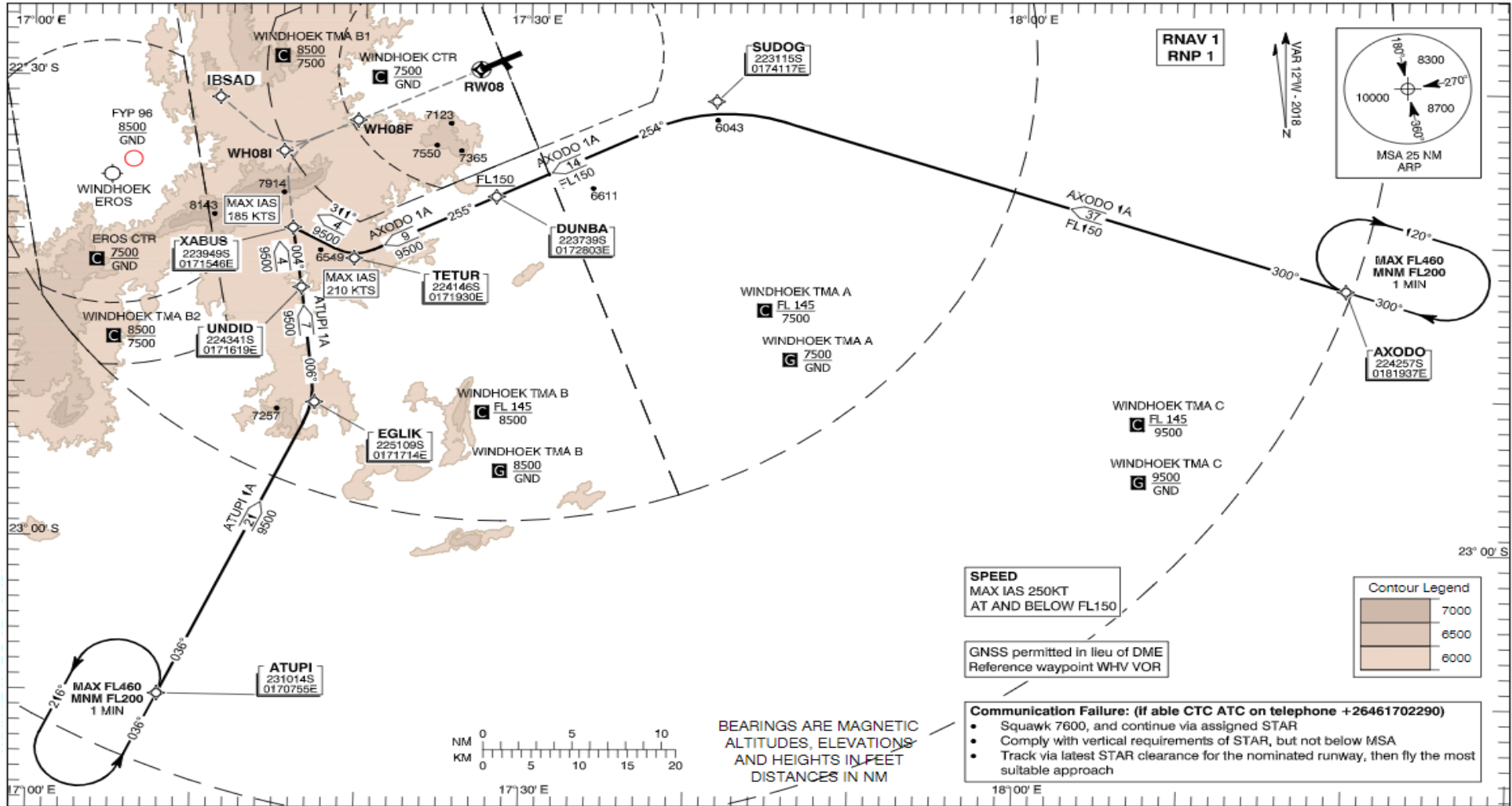
	Page
Aerodrome Chart – ICAO	AD 2-19
Area Chart – ICAO (Reserved)	AD 2-21
Standard Departure Chart – Instrument – ICAO EGMAS 1A, UTULO 1A RWY 08	AD 2-23
Narrative EGMAS 1A and UTULO 1A RWY 08	AD 2-24
Standard Departure Chart – Instrument – ICAO EGMAS 1B, UTULO 1B RWY 26	AD 2-25
Narrative EGMAS 1B, UTULO 1B RWY 26	AD 2-26
Standard Arrival Chart – Instrument – ICAO ATUPI 1A, AXODO 1A RWY 08	AD 2-27
Narrative ATUPI 1A, AXODO 1A RWY 08	AD 2-28
Standard Arrival Chart – Instrument – ICAO ATUPI 1B, AXODO 1B RWY 26	AD 2-29
Narrative ATUPI 1B, AXODO 1B RWY 26	AD 2-30
ATC Surveillance Minimum Altitude Chart – ICAO	AD 2-31
ATC Surveillance Minimum Altitude Coordinates	AD 2-32
Instrument Approach Chart – ICAO ILS or LOC RWY 26	AD 2-33
Data Code ILS or LOC RWY 26	AD 2-34
Instrument Approach Chart – ICAO CIRCLING VOR RWY 26	AD 2-35
Data Code Circling VOR RWY 26	AD 2-36
Instrument Approach Chart – ICAO RNP RWY 08	AD 2-37
Data Code RNP RWY 08	AD 2-38
Instrument Approach Chart – ICAO RNP RWY 26	AD 2-39
Data Code RNP RWY 26	AD 2-40
Visual Approach Chart – FYWH	AD 2-41
Visual Approach Chart – FYWE and FYWH	AD 2-43

**STANDARD ARRIVAL CHART -
INSTRUMENT (STAR) - ICAO**

TRANSITION ALTITUDE
10000 FT

ATIS	126.20
APP	120.50
TWR	118.10
APN	125.90

WINDHOEK - Hosea Kutako/Intl. (FYWH)
JET ONLY
RWY 08
ATUPI 1A, AXODO 1A



ATUPI 1A RWY 08

- From ATUPI track 035° to EGLIK
- From EGLIK track 006° to UN DID. MAX IAS 210KT from UN DID
- From UN DID track 004° to OLLIE for RNP or VSA RWY 08 approach. MAX IAS 185KT from OLLIE

AXODO 1A RWY 08

- From AXODO track 300° to SUDOG
- From SUDOG track 254° to DUNBA. CROSS DUNBA AT OR ABV FL150
- From DUNBA track 255° to TETUR. MAX IAS 210KT from TETUR
- From TETUR track 299° to OLLIE for RNP or VSA RWY 08 approach. MAX IAS 185KT from OLLIE

SUGGESTED DATABASE CODING

ATUPI 1A

Navigational performance	P/T	WPT Name	Latitude / Longitude	Fly-By or Fly- Over	True track (°) / Magnetic track (°)	Distance (nm)	Upper limit (FL/ft) / Lower limit (FL/ft)	Speed (kts)	Remarks
RNAV 1	IF	ATUPI	231013.74S / 0170755.40E	Fly-By	-	-	-/FL200	-	-
RNAV 1	TF	EGLIK	225109.07S / 0171713.67E	Fly-By	024.3 / 036	20.9	-/9500	-	-
RNAV 1	TF	UN DID	224341.21S / 0171619.49E	Fly-By	353.6 / 006	7.5	-/9500	210	L
RNAV 1	TF	XABUS	223948.57S / 0171546.04E	Fly-By	352.4 / 004	3.9	-/9500	185	IAF

AXODO 1A

Navigational performance	P/T	WPT Name	Latitude / Longitude	Fly-By or Fly- Over	True track (°) / Magnetic track (°)	Distance (nm)	Upper limit (FL/ft) / Lower limit (FL/ft)	Speed (kts)	Remarks
RNAV 1	IF	AXODO	224257.21S / 0181936.53E	Fly-By	-	-	-/FL200	-	-
RNAV 1	TF	SUDOG	223114.95S / 0174117.37E	Fly-By	288.1 / 300	37.3	-/FL150	-	-
RNAV 1	TF	DUNBA	223739.32S / 0172803.15E	Fly-By	242.4 / 254	13.8	-/FL150	250	L
RNAV 1	TF	TETUR	224145.87S / 0171929.59E	Fly-By	242.6 / 255	8.9	-/9500	210	-
RNAV 1	TF	XABUS	223948.57S / 0171546.04E	Fly-By	299.5 / 311	4.0	-/9500	185	IAF

Hold Identification - ATUPI

Holding Fix	Latitude (N) / Longitude (W)	Inbound True Track (degrees)	Inbound Mag Track (degrees)	Maximum Indicated Airspace (kts)	Maximum/ Minimum Holding Level / Altitude (FL/ft)	Outbound time (min)	Direction of turn
ATUPI	231013.74S / 0170755.40E	024.4	036	315	FL460 / FL200	1	L

Hold Identification - AXODO

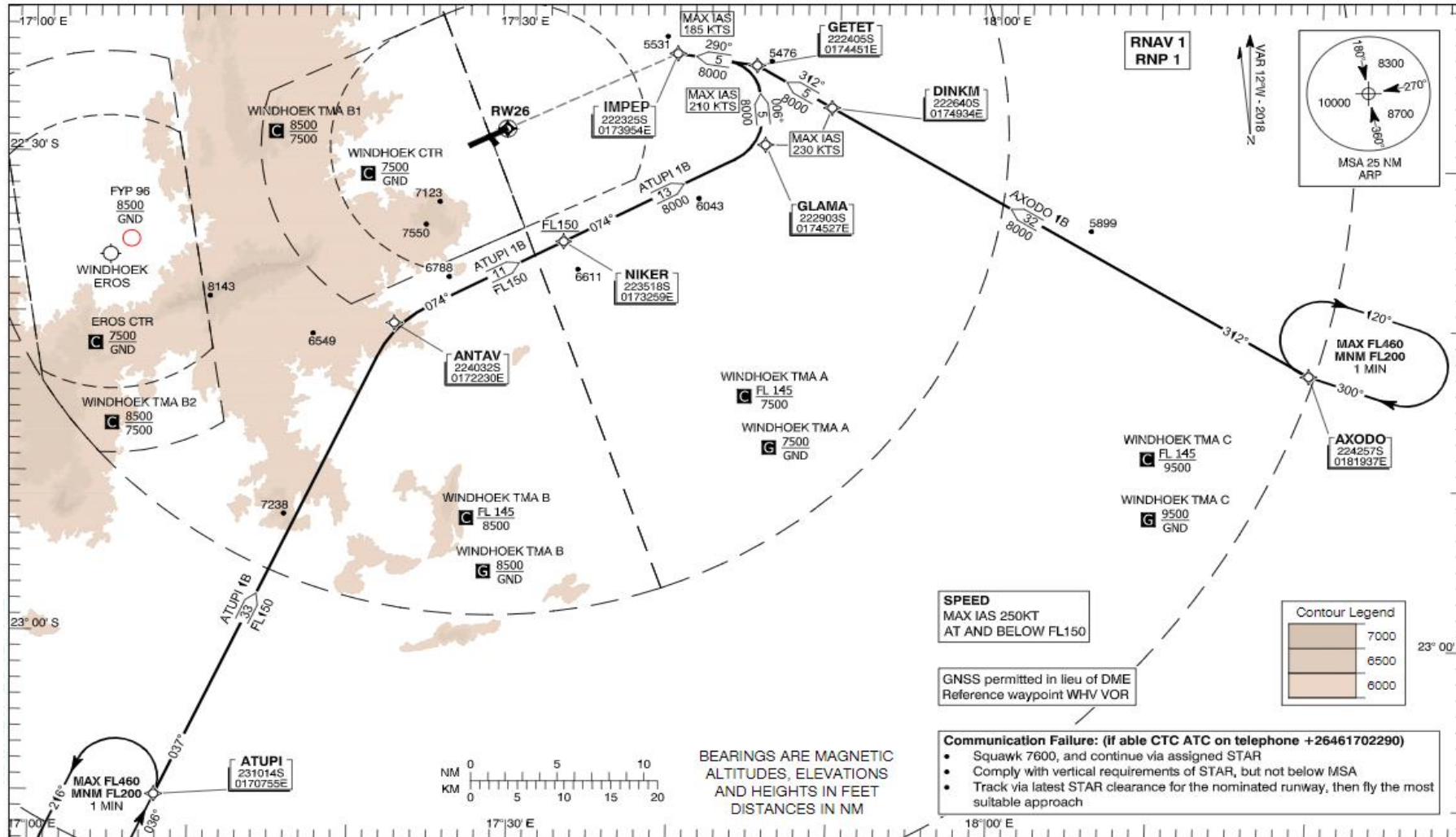
Holding Fix	Latitude (N) / Longitude (W)	Inbound True Track (degrees)	Inbound Mag Track (degrees)	Maximum Indicated Airspace (kts)	Maximum/ Minimum Holding Level / Altitude (FL/ft)	Outbound time (min)	Direction of turn
AXODO	224257.21S / 0181936.53E	288.0	300	315	FL460 / FL200	1	R

STANDARD ARRIVAL CHART -
INSTRUMENT (STAR) - ICAO

TRANSITION ALTITUDE
10000 FT

ATIS	126.20
APP	120.50
TWR	118.10
APN	125.90

WINDHOEK - Hosea Kutako/Intl. (FYWH)
JET ONLY
RWY 26
ATUPI 1B, AXODO 1B



ATUPI 1B RWY 26

- From ATUPI track 037° to ANTAV
- From ANTAV track 074° to NIKER. CROSS NIKER AT OR ABV FL150
- From NIKER track 074° to GLAMA. MAX IAS 230KT from GLAMA
- From GLAMA track 006° to GETET. MAX IAS 210KT from GETET
- From GETET track 290° to FRITZ for ILS, LOC, or RNP RWY 26 approach. MAX IAS 185KT from FRITZ

AXODO 1B RWY 26

- From AXODO track 312° to DINKM. MAX IAS 230KT from DINKM
- From DINKM track 312° to GETET. MAX IAS 210KT from GETET
- From GETET track 290° to FRITZ for ILS, LOC, or RNP RWY 26 approach. MAX IAS 185KT from FRITZ

SUGGESTED DATABASE CODING - ATUPI 1B

Navigational performance	P/T	WPT Name	Latitude / Longitude	Fly-By or Fly- Over	True track (°) / Magnetic track (°)	Distance (nm)	Upper limit (FL/ft) / Lower limit (FL/ ft)	Speed (kts)	Remarks
RNAV 1	IF	ATUPI	231013.74S / 0170755.40E	Fly-By	-	-	-/FL200	-	-
RNAV 1	TF	ANTAV	224032.11S / 0172229.78E	Fly-By	024.5 / 037	32.5	-/FL150	-	-
RNAV 1	TF	NIKER	223517.77S / 0173258.90E	Fly-By	061.7 / 074	11.0	-/FL150	250	R
RNAV 1	TF	GLAMA	222902.57S / 0174527.12E	Fly-By	061.7 / 074	13.1	-/ 8000	230	-
RNAV 1	TF	GETET	222405.06S / 0174450.72E	Fly-By	353.5 / 006	5.0	-/ 8000	210	L
RNAV 1	TF	IMPEP	222325.18S / 0173953.96E	Fly-By	278.2 / 290	4.6	-/ 8000	185	IF

AXODO 1B

Navigational performance	P/T	WPT Name	Latitude / Longitude	Fly-By or Fly- Over	True track (°) / Magnetic track (°)	Distance (nm)	Upper limit (FL/ft) / Lower limit (FL/ ft)	Speed (kts)	Remarks
RNAV 1	IF	AXODO	224257.21S / 0181936.53E	Fly-By	-	-	-/FL200	-	-
RNAV 1	TF	DINKM	222639.90S / 0174933.71E	Fly-By	300.2 / 312	32.2	-/ 8000	230	-
RNAV 1	TF	GETET	222405.06S / 0174450.72E	Fly-By	300.5 / 312	5.1	-/ 8000	210	-
RNAV 1	TF	IMPEP	222325.18S / 0173953.96E	Fly-By	278.2 / 290	4.6	-/ 8000	185	IF

Hold Identification - ATUPI

Holding Fix	Latitude (N) / Longitude (W)	Inbound True Track (degrees)	Inbound Mag Track (degrees)	Maximum Indicated Airspace (kts)	Maximum/ Minimum Holding Level / Altitude (FL/ft)	Outbound time (min)	Direction of turn
ATUPI	231013.74S / 0170755.40E	024.4	036	315	FL460 / FL200	1	L

Hold Identification - AXODO

Holding Fix	Latitude (N) / Longitude (W)	Inbound True Track (degrees)	Inbound Mag Track (degrees)	Maximum Indicated Airspace (kts)	Maximum/ Minimum Holding Level / Altitude (FL/ft)	Outbound time (min)	Direction of turn
AXODO	224257.21S / 0181936.53E	288.0	300	315	FL460 / FL200	1	R

ILS CAT I approach

Fix	IAF JOWEE	IMPEP D12 WHV	FAF D8.8 WHV	MATP D3 WHV	MATP D12 WHV	VOR/DME WHV
Fix coordinates	221441.4S 0172627.6E	222325.2S 0173954.0E	222451.0S 0173648.5E	223006.4S 0172524.3E	221909.0S 0173612.2E	222838.5S 0172814.1E
Fix Formation Bearing σ T	353.25 WHV	063.64 WD	063.65 WD	240.87 WHV	0.38.00 WHV	-
Fix Formation Distances	14.00 WHV	11.99 WHV	8.80 WHV	3.00 WHV	12.00 WHV	-

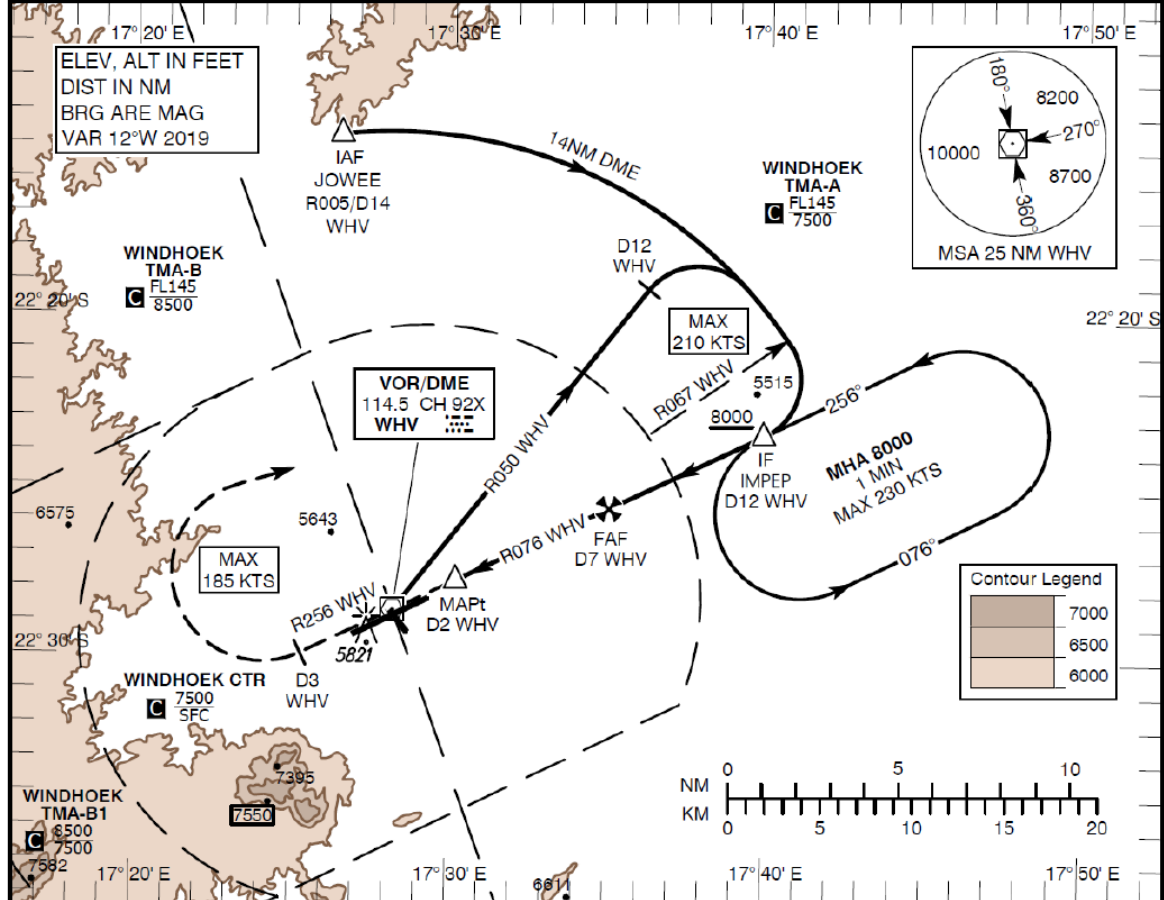
LOC only approach

Descent Angle:	3.00 °						
Fix	IAF JOWEE	IMPEP D12 WHV	FAF D8.8 WHV	MAPt D2.0 WHV	MAPt D3.0 WHV	MATP D12 WHV	VOR/DME WHV
Fix Coordinates	221441.4S 0172627.6E	222325.2S 0173954.0E	222451.0S 0173648.5E	222753.0S 0173014.0E	223006.4S 0172524.3E	221909.0S 0173612.2E	222838.5S 0172814.1E
Fix Formation Bearing σ T	353.25 WHV	063.64 WD	063.65 WD	063.64 WD	240.87 WHV	0.38.00 WHV	-
Fix Formation Distances	14.00 WHV	11.99 WHV	8.80 WHV	2.00 WHV	3.00 WHV	12.00 WHV	-

Holding Identification – IMPEP D12 WHV

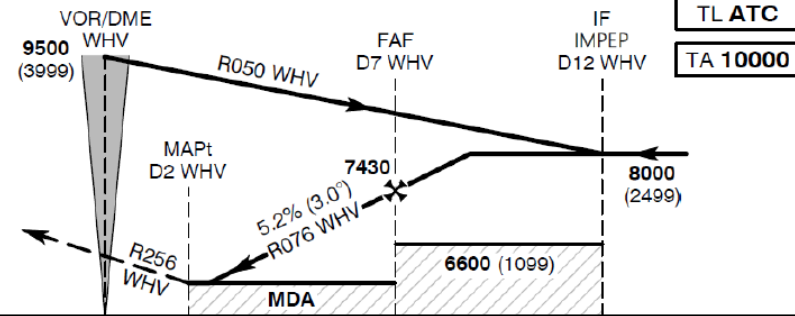
Holding Fix	Latitude /Longitude	Inbound True Track (degrees)	Inbound Magnetic Track (degrees)	Maximum Indicated Airspeed (kts)	Maximum/Minimum Holding Level / Altitude (FL/ft)	Outbound time (min)	Direction of Turn
IMPEP D12 WHV	222325.2S 0173954.0E	243.5	256	230	- / 8000	1	L

INSTRUMENT APPROACH CHART - ICAO **AERODROME ELEV - 5641 FT** **ATIS 126.20** **WINDHOEK (FYWH) Hosea Kutako/Intl**
 HEIGHT RELATED TO **APP 120.50** **CIRCLING VOR RWY 26**
THR RWY - 26 ELEV - 5501 FT **TWR 118.10** **(CAT A, B, C, D)**
APN 125.90



MISSED APPROACH:

Climb straight ahead on R256. At D3 WHV turn right (MAX IAS 185KTS) and intercept R050 outbound. At D12 WHV turn right (MAX IAS 210KTS) to intercept D14 ARC WHV. Passing R067 turn right, intercept R076 inbound and continue to IMPEP to join the hold or as directed by ATC. Climb to 8000ft.



THR ELEV 5501

NM VOR/DME WHV 4 3 2 1 0 1 2 3 4 5 6 7 8 9 10 11 12 13 14 15

Aircraft CAT		A	B	C	D	
OCA (H)	Circling	6140 (499)	6250 (609)	6520 (879)	6590 (949)	
Ground Speed	KTS	80	100	120	140	160
Descent Rate (3.0°)	FT/MIN	425	530	635	745	850

NOTES:

- Initial approach altitude WHV 9500 or higher MSA.
- Track shortening inside IMPEP not permitted.
- WHV DME required.
- GNSS permitted in lieu of DME. Reference waypoint WHV VOR.

Circling to the SOUTH prohibited

VOR approach

Nominal Descent Angle:	3.00 °						
Fix	IAF JOWEE	IMPEP D12 WHV	FAF D7.0 WHV	MAPt D2.0 WHV	MATP D3 WHV	MATP D12 WHV	VOR/DMEWHV
Fix Coordinates	221441.4S 0172627.6E	222325.2S 0173954.0E	222535.9S 0173502.3E	222745.4S 0173012.9E	222956.8S 0172518.9E	221909.0S 0173612.2E	222838.5S 0172814.1E
Fix Formation Bearing °T	353.25 WHV	064.32 WHV	064.32 WHV	064.32 WHV	244.32 WHV	0.38.00 WHV	-
Fix Formation Distances	14.00 WHV	11.99 WHV	6.99 WHV	2.04 WHV	3.00 WHV	12.00 WHV	-

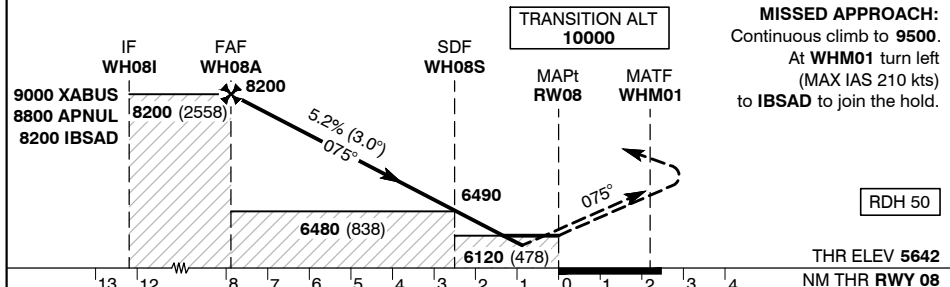
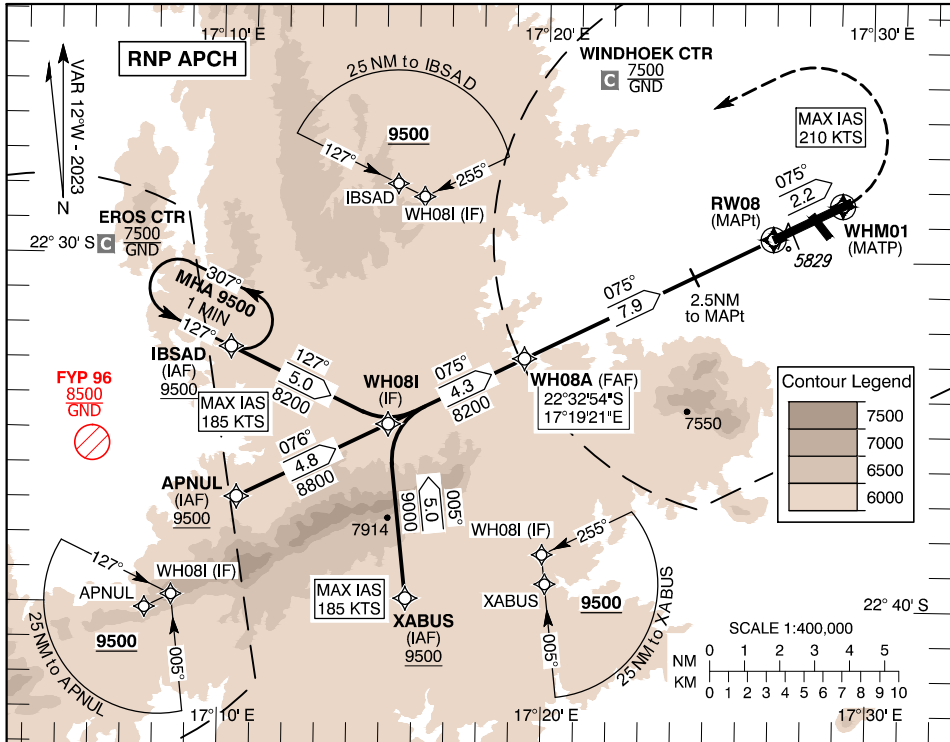
Holding Identification – IMPEP D12 WHV

Holding Fix	Latitude /Longitude	Inbound True Track (degrees)	Inbound Magnetic Track (degrees)	Maximum Indicated Airspeed (kts)	Maximum/Minimum Holding Level /Altitude (FL/ft)	Outbound time (min)	Direction of Turn
IMPEP D12 WHV	222325.2S 0173954.0E	243.5	256	230	- / 8000	1	L

INSTRUMENT AERODROME ELEV - 5641 FT
APPROACH HEIGHT RELATED TO
CHART - ICAO THR RWY - 08 ELEV - 5642 FT

ATIS 126.20
 APP 120.50
 TWR 118.10
 APN 125.90

WINDHOEK - Hosea (FYWH)
Kutako/Intl. RNP RWY 08
 MNM TEMP -15°C
 MAX TEMP +48°C



Aircraft CAT		A	B	C	D		
OCA (H)	LNAV	6120 (478)					
	LNAV/VNAV	5980 (338)	6000 (358)	6010 (368)	6020 (378)		
Circling (Heights AAL)		6300 (659)	6500 (859)	8100 (2459)	8100 (2459)		
Circling - N of RWY (AAL)		6150 (509)	6260 (619)	6570 (929)	6630 (989)		
Distance to MAPt		NM 7	6	5	4	3	2
Altitude		FT 7920 (2278)	7600 (1958)	7280 (1638)	6960 (1318)	6650 (1008)	6330 (688)
Ground Speed		KTS 80	100	120	140	160	
Descent Rate (3.0°)		FT/MIN 425	530	635	745	850	

NOTES:
 1. Track shortening inside IAF not permitted.

Bearings are magnetic.
Altitudes, Elevation and Heights in feet. Distances in NM.

CHANGES: Left base initial leg, FAF OCA, Airspace, Circling, Temp restriction, Holding, RDH, Initial & FAF WPT renamed.

Serial #	Navigational performance	Path descriptor	Waypoint identifier	Waypoint coordinates	Fly-Over	True track / Magnetic track	Distance [nm]	Turn direction	Upper limit / Lower limit	Speed [kts]	VPA [°] / TCH [ft]	Remarks
1	RNP APCH	IF	XABUS	22°39'48.57"S / 017°15'46.04"E	-	-	-	-	-	185	-	-
2	RNP APCH	TF	WH08I	22°34'49.38"S / 017°15'10.13"E	N	353.6 / 005	5.0	-	-	185	-	-
3	RNP APCH	TF	WH08A	22°32'53.88"S / 017°19'20.88"E	N	063.6 / 075	4.3	R	- / 8200	-	-	-
4	RNP APCH	TF	WH08S	22°30'29.98"S / 017°24'33.34"E	N	063.6 / 075	5.4	-	-	-	-	-
5	RNP APCH	TF	RW08	22°29'23.07"S / 017°26'58.44"E	Y	063.6 / 075	2.5	-	-	-	3.00 / 50	-
6	RNP APCH	CF	WHM01	22°28'24.27"S / 017°29'06.09"E	Y	063.6 / 075	-	-	-	210	-	085° WHV / D0.8 WHV
7	RNP APCH	DF	IBSAD	22°32'39.16"S / 017°10'17.90"E	N	-	-	L	-	210	-	-

Serial #	Navigational performance	Path descriptor	Waypoint identifier	Waypoint coordinates	Fly-Over	True track / Magnetic track	Distance [nm]	Turn direction	Upper limit / Lower limit	Speed [kts]	VPA [°] / TCH [ft]	Remarks
1	RNP APCH	IF	APNUL	22°36'57.00"S / 017°10'31.00"E	-	-	-	-	-	-	-	-
2	RNP APCH	TF	WH08I	22°34'49.38"S / 017°15'10.13"E	N	063.8 / 076	4.8	-	-	-	-	-
3	RNP APCH	TF	WH08A	22°32'53.88"S / 017°19'20.88"E	N	063.6 / 075	4.3	-	- / 8200	-	-	-
4	RNP APCH	TF	WH08S	22°30'29.98"S / 017°24'33.34"E	N	063.6 / 075	5.4	-	-	-	-	-
5	RNP APCH	TF	RW08	22°29'23.07"S / 017°26'58.44"E	Y	063.6 / 075	2.5	-	-	-	3.00 / 50	-
6	RNP APCH	CF	WHM01	22°28'24.27"S / 017°29'06.09"E	Y	063.6 / 075	-	-	-	210	-	085° WHV / D0.8 WHV
7	RNP APCH	DF	IBSAD	22°32'39.16"S / 017°10'17.90"E	N	-	-	L	-	210	-	-

Serial #	Navigational performance	Path descriptor	Waypoint identifier	Waypoint coordinates	Fly-Over	True track / Magnetic track	Distance [nm]	Turn direction	Upper limit / Lower limit	Speed [kts]	VPA [°] / TCH [ft]	Remarks
1	RNP APCH	IF	IBSAD	22°32'39.16"S / 017°10'17.90"E	-	-	-	-	-	185	-	-
2	RNP APCH	TF	WH08I	22°34'49.38"S / 017°15'10.13"E	N	115.6 / 127	5.0	-	-	185	-	-
3	RNP APCH	TF	WH08A	22°32'53.88"S / 017°19'20.88"E	N	063.6 / 075	4.3	L	- / 8200	-	-	-
4	RNP APCH	TF	WH08S	22°30'29.98"S / 017°24'33.34"E	N	063.6 / 075	5.4	-	-	-	-	-
5	RNP APCH	TF	RW08	22°29'23.07"S / 017°26'58.44"E	Y	063.6 / 075	2.5	-	-	-	3.00 / 50	-
6	RNP APCH	CF	WHM01	22°28'24.27"S / 017°29'06.09"E	Y	063.6 / 075	-	-	-	210	-	085° WHV / D0.8 WHV
7	RNP APCH	DF	IBSAD	22°32'39.16"S / 017°10'17.90"E	N	-	-	L	-	210	-	-

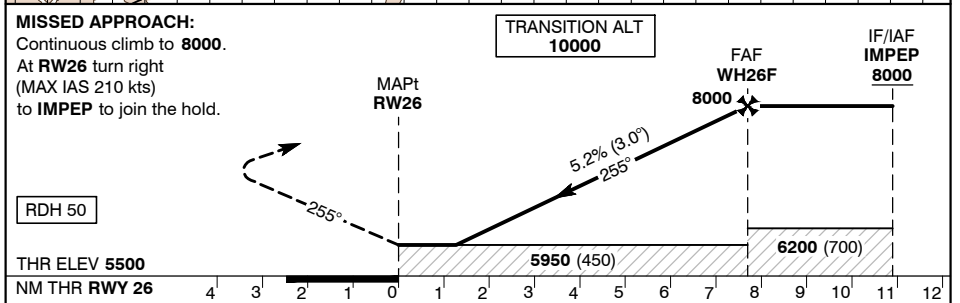
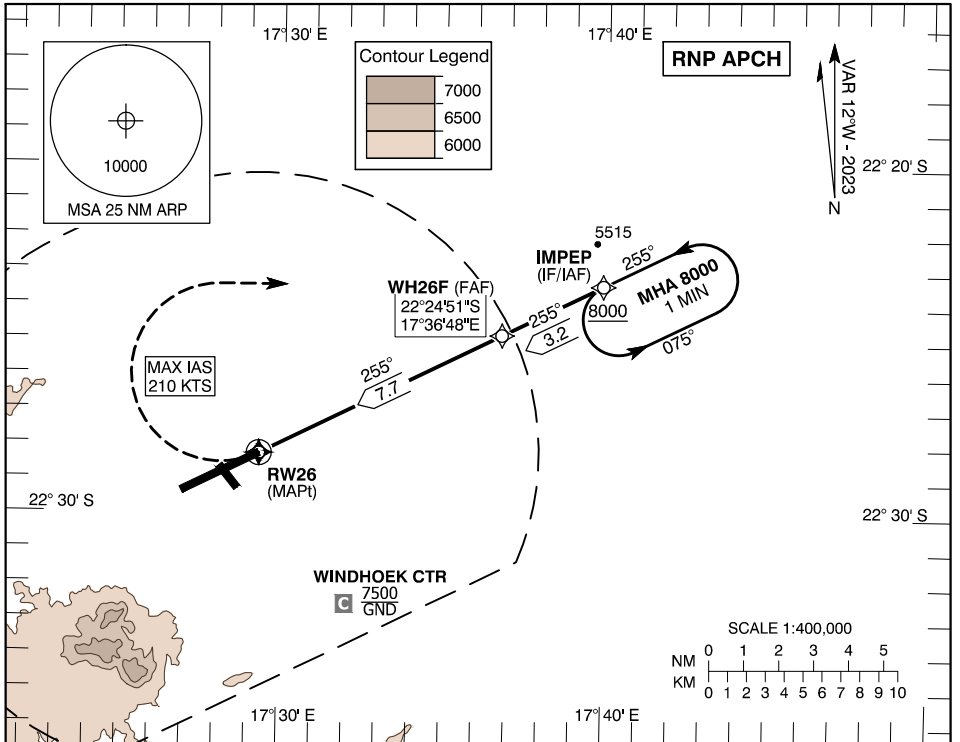
Hold Identification – AD 2.37

Holding Fix	Latitude (N) / Longitude (W)	Inbound True Track (degrees)	Inbound Mag Track (degrees)	Maximum Indicated Airspeed (kts)	Minimum Holding Altitude/ Level (FL/ft)	Maximum Holding Altitude/ Level (FL/ft)	Outbound time (min)	Direction of Turn
IBSAD	22°32'39.16"S / 017°10'17.90"E	115.7	127	-	9500	-	1	L

INSTRUMENT AERODROME ELEV - 5641 FT
APPROACH HEIGHT RELATED TO
CHART - ICAO THR RWY - 26 ELEV - 5500 FT

ATIS 126.20
APP 120.50
TWR 118.10
APN 125.90

WINDHOEK - Hosea (FYWH) Kutako/Intl. **RNP RWY 26**
MNM TEMP -15°C
MAX TEMP +51°C



MISSED APPROACH:
Continuous climb to 8000.
At RWY26 turn right (MAX IAS 210 kts) to IMPEP to join the hold.

RDH 50

THR ELEV 5500
NM THR RWY 26

Aircraft CAT	A	B	C	D				
OCA (H)	5950 (450)							
LNAV	5950 (450)							
LNAV/VNAV	5920 (420)	5940 (440)	5950 (450)	5990 (490)				
Circling (Heights AAL)	6300 (659)	6500 (859)	8100 (2459)	8100 (2459)				
Circling - N of RWY (AAL)	6150 (509)	6260 (619)	6570 (929)	6630 (989)				
Distance to MAPt	NM	2	3	4	5	6	7	7.5
Altitude	FT	6190 (690)	6500 (1000)	6820 (1320)	7140 (1640)	7460 (1960)	7780 (2280)	7940 (2440)
Ground Speed	KTS	80	100	120	140	160		
Descent Rate (3.0°)	FT/MIN	425	530	635	745	850		

NOTES:

- Track shortening inside IAF not permitted.
- If above 8000ft at IMPEP, descent in the hold.
- Arrival outside of the STARs to expect radar vectoring from ATC.
- In case of radar failure route via IMPEP not below 10000ft and then to descend in the hold to 8000ft.

Bearings are magnetic.
Altitudes, Elevation and Heights in feet. Distances in NM.

CHANGES: TAA, MAX temp, MSA, Circling, Bearings, Temp restriction, RDH, BNAV minimums, Notes, Initial WPT renamed.

Serial #	Navigational performance	Path descriptor	Waypoint identifier	Waypoint coordinates	Fly-Over	True track / Magnetic track	Distance [nm]	Turn direction	Upper limit / Lower limit	Speed [kts]	VPA [°] / TCH [ft]	Remarks
1	RNP APCH	IF	IMPEP	22°23'25.18"S / 017°39'53.96"E	-	-	-	-	- / 8000	-	-	-
2	RNP APCH	TF	WH26F	22°24'51.14"S / 017°36'48.04"E	N	243.6 / 255	3.2	-	- / 8000	-	-	-
3	RNP APCH	CF	RW26	22°28'17.12"S / 017°29'21.61"E	Y	243.6 / 255	-	-	-	-	3.00 / 50	083° WHV / D1.1 WHV
4	RNP APCH	DF	IMPEP	22°23'25.18"S / 017°39'53.96"E	N	-	-	R	-	210	-	-

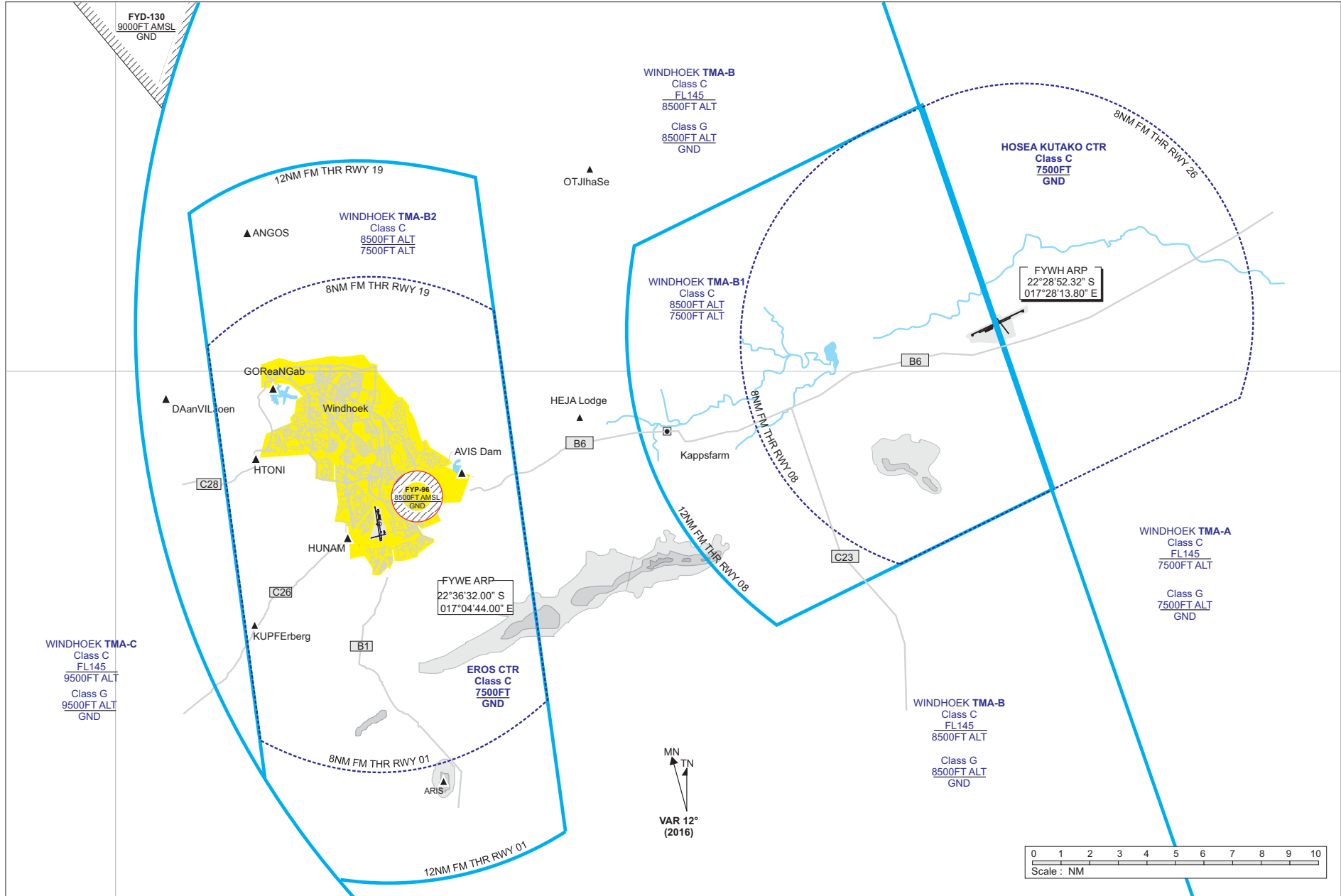
Hold Identification – AD 2.37

Holding Fix	Latitude (N) / Longitude (W)	Inbound True Track (degrees)	Inbound Mag Track (degrees)	Maximum Indicated Airspeed (kts)	Minimum Holding Altitude/ Level (FL/ft)	Maximum Holding Altitude/ Level (FL/ft)	Outbound time (min)	Direction of Turn
IMPEP	22°23'25.18"S / 017°39'53.96"E	243.5	255	-	8000	-	1	L

**VISUAL APPROACH
CHART**

EROS & HOSEA KUTAKO CTR

**CTR
NAMIBIA**



INTENTIONALLY LEFT BLANK