 <p>NCAA NAMIBIA CIVIL AVIATION AUTHORITY</p>	<p>REPUBLIC OF NAMIBIA</p> <p>NAMIBIA CIVIL AVIATION AUTHORITY</p> <p>AIRAC</p> <p>AIP SUPPLEMENT</p>	<p>Executive Director Namibia Civil Aviation Authority Private Bag 12003 Ausspannplatz WINDHOEK</p>
<p>Tel: +264 61 702082 Fax +264 61 702088 e-mail: aip@dca.com.na AFTN: FYWHYNYX</p>		<p>AIRAC AIP SUP S14/2018 6 December 2018</p>

REVIEWED FYWH ATC SMAC

Effective date: 31 January 2019

Validity Period: PERM

1. It is an ICAO requirement that all Instrument Flight Procedures be reviewed at a period not exceeding 5 years (*refer ICAO Doc 9906 Quality Assurance Manual for Flight Procedure Design – Vol 1 Page 13 Point 17*).
2. The ATC Surveillance Minimum Altitude Chart (ATC SMAC) for Hosea Kutako International (FYWH) has been reviewed.
3. The ATC SMAC conforms to the charting requirements as per ICAO Doc 8697 –Aeronautical Chart Manual
4. Operators and ATC will notice a difference from the current Radar Terrain Chart. The old style chart provided terrain clearance only and does not take into account airspace limitations. The new chart does.
5. The verso of the ATC SMAC holds the lateral dimensions for each sector with the corresponding vectoring altitude.
6. The chart order has been rearranged to conform with the requirements of ICAO DOC 8126.

7. Renumber existing pages according to the table below:

Existing	New
AD 2-21	AD 2-23
AD 2-22	AD 2-34
AD 2-23	AD 2-25
AD 2-24	AD 2-26
AD 2-25	AD 2-27
AD 2-26	AD 2-28
AD 2-27	AD 2-29
AD 2-28	AD 2-30
AD 2-31	AD 2-33
AD 2-32	AD 2-34
AD 2-33	AD 2-35
AD 2-34	AD 2-36
AD 2-35	AD 2-37
AD 2-36	AD 2-38

8. This AIP SUP will be cancelled when incorporated into the AIP, anticipated 28 March 2019.

9. Appendices

1. FYWH AD 2-16 FYWH 2.24 CHARTS RELATED TO AN AERODROME
2. FYWH AD 2-21 ATC Surveillance Minimum Altitude Chart - ICAO
3. FYWH AD 2-22 ATC Surveillance Minimum Coordinates

APPENDIX 1:

FYWH 2.24 CHARTS RELATED TO AN AERODROME

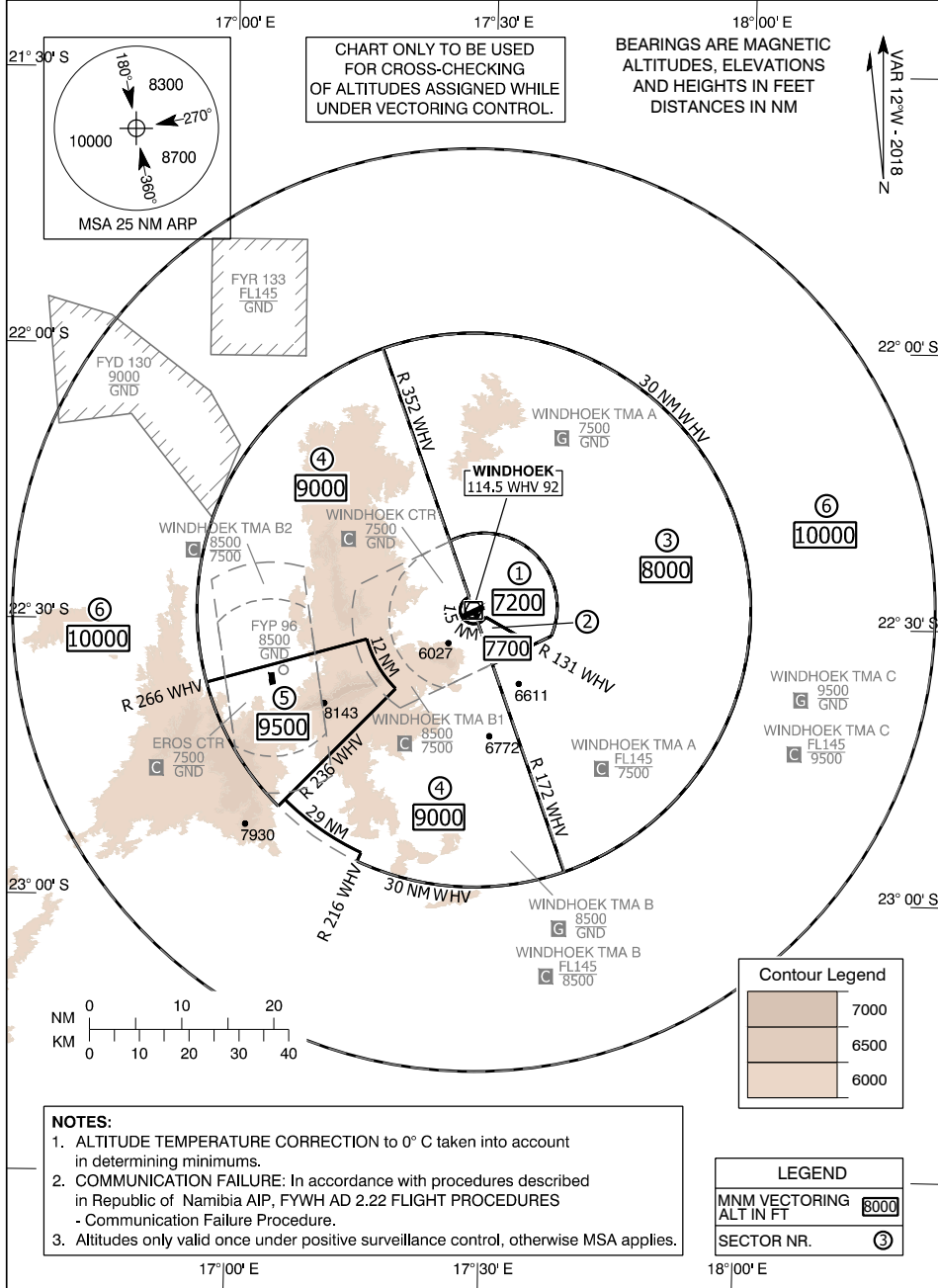
	Page
Aerodrome Chart - ICAO	AD 2-19
ATC Surveillance Minimum Altitude Chart - ICAO	AD 2-21
ATC Surveillance Minimum Coordinates	AD 2-22
Instrument Approach Chart – ICAO ILS Z or LOC Z RWY 26	AD 2-23
Instrument Approach Chart – ICAO VOR RWY 26	AD 2-25
Instrument Approach Chart – ICAO RNP RWY 08	AD 2-27
Instrument Approach Chart – ICAO RNP RWY 26	AD 2-29
Visual Approach Chart – FYWH	AD 2-31
Visual Approach Chart – FYWE and FYWH	AD 2-35
Area Chart	AD 2-37

**ATC SURVEILLANCE
MINIMUM ALTITUDE
CHART - ICAO**

**AERODROME ELEV - 5641 FT
TRANSITION ALT - 10000 FT**

ATIS	126.20
APP	120.50
TWR	118.10
APN	125.90

**WINDHOEK
Hosea Kutako/Intl.
(FYWH)**



CHANGES: NEW

ATC Surveillance Minimum Altitude Coordinates

Sector 1. MNM ALT 7200 FT

22°21'11"S 017°25'19"E, 22°27'14"S 017°27'41"E,
arc 1.5 NM radius centre 22°28'39"S 017°28'14"E,
22°29'22"S 017°29'39"E, 22°32'16"S 017°35'17"E,
22°31'19"S 017°37'21"E,
arc 8 NM radius centre 22°28'17"S 017°29'21"E,
22°21'05"S 017°25'34"E, 22°21'11"S 017°25'19"E

Sector 2. MNM ALT 7700 FT

22°32'16"S 017°35'17"E, 22°29'22"S 017°29'39"E,
arc 1.5 NM radius centre 22°28'39"S 017°28'14"E,
22°30'03"S 017°28'47"E, 22°34'28"S 017°30'31"E,
22°32'16"S 017°35'17"E

Sector 3. MNM ALT 8000 FT

22°21'11"S 017°25'19"E, 22°00'21"S 017°17'12"E,
arc 30 NM radius centre 22°28'39"S 017°28'14"E,
22°56'55"S 017°39'21"E, 22°34'28"S 017°30'31"E,
22°31'19"S 017°37'21"E,
arc 8 NM radius centre 22°28'17"S 017°29'21"E,
22°21'05"S 017°25'34"E, 22°21'11"S 017°25'19"E

Sector 4. MNM ALT 9000 FT

22°00'21"S 017°17'12"E, 22°27'14"S 017°27'41"E,
arc 1.5 NM radius centre 22°28'39"S 017°28'14"E,
22°30'03"S 017°28'47"E, 22°56'55"S 017°39'21"E,
arc 30 NM radius centre 22°28'39"S 017°28'14"E,
22°56'07"S 017°15'01"E, 22°55'13"S 017°15'28"E,
arc 29 NM radius centre 22°28'39"S 017°28'14"E,
22°49'33"S 017°06'26"E, 22°37'18"S 017°19'14"E,
arc 12 NM radius centre 22°28'39"S 017°28'14"E,
22°31'57"S 017°15'47"E, 22°36'53"S 016°57'04"E,
arc 30 NM radius centre 22°28'39"S 017°28'14"E,
22°00'21"S 017°17'12"E

Sector 5. MNM ALT 9500 FT

22°36'53"S 016°57'04"E, 22°31'57"S 017°15'47"E,
arc 12 NM radius centre 22°28'39"S 017°28'14"E,
22°37'18"S 017°19'14"E, 22°50'16"S 017°05'41"E,
arc 30 NM radius centre 22°28'39"S 017°28'14"E,
22°36'53"S 016°57'04"E

Sector 6. MNM ALT 10000 FT

22°56'07"S 017°15'01"E,
arc 30 NM radius centre 22°28'39"S 017°28'14"E,
22°50'16"S 017°05'41"E, 22°49'33"S 017°06'26"E,
arc 29 NM radius centre 22°28'39"S 017°28'14"E,
22°55'13"S 017°15'28"E, 22°56'07"S 017°15'01"E
arc 50 NM radius centre 22°28'39"S 017°28'14"E